

2019–2020 Pawleys Island Beach Renourishment

Project Update — February 21, 2020

Issue No. 6

*For more information about this project, visit the town website at:
www.townofpawleysisland.com/beach-renourishment.*

Mobilization & Construction Progress

The Pawleys Island Nourishment Project continues to proceed well in the new year. The beach fill is complete from the south end of the island to Station 78+00 (~5,900 ft south of Pawleys Pier). So far, Marinex has placed approximately 800,000 cy of sand along the beach. This represents ~73% of the project volume.

Due to the shorter distance between the beach and second borrow area, production rates have continued to improve and progress along the shoreline has been more noticeable than earlier in the project. Now that Marinex has reached Station 78+00, the dune feature located seaward of the first row of homes is complete. The entire beach south of that point has been cleared of debris and shore pipelines, and has been dressed and graded by Marinex.

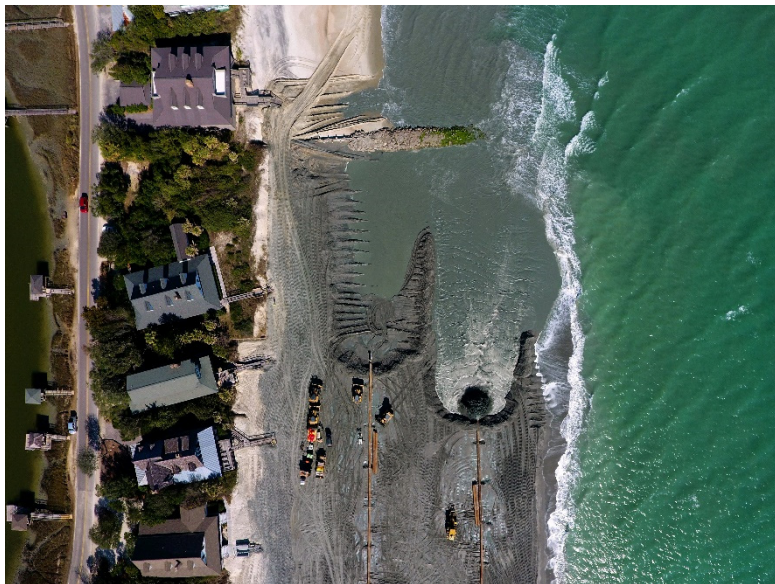
Construction has progressed past Pritchard St and beach access has been re-opened to the public, however, the Hazard St access remains closed due to its proximity to the work site. The South End parking lot is used as a staging area for contractor equipment and will remain closed for the duration of the project.



Town of
Pawleys Island
SOUTH CAROLINA

Now that the nourishment fill is nearing Station 80+00, Marinex has been working between weather delays to move the submerged pipeline that presently comes onshore at the South End parking lot. The new subline will land on the beach near Station 73+00 and will allow the contractor to continue pumping operations to the north through project completion. Although the beach south of this point is graded and dressed, there may be areas along the completed beach that could be used to temporarily store pipe after the main line is removed. Marinex is working to minimize its construction footprint and open as much beach as possible to owners and visitors.

Marinex Construction has placed approximately 800,000 cubic yards of sand on the beach (~73% of the total project volume). This photo shows the project site at Station 54+00 near Hazard Street on January 29, 2020.



Get a Detailed View of the Renourishment Project!

You can view a high resolution aerial view of the renourishment project and zoom in on key areas of interest. The project engineering firm (Coastal Science & Engineering - CSE) obtained a high-resolution photo of the project area on February 19th. Click the photo on the left or visit <https://tinyurl.com/PawleysView> for a birds-eye view.



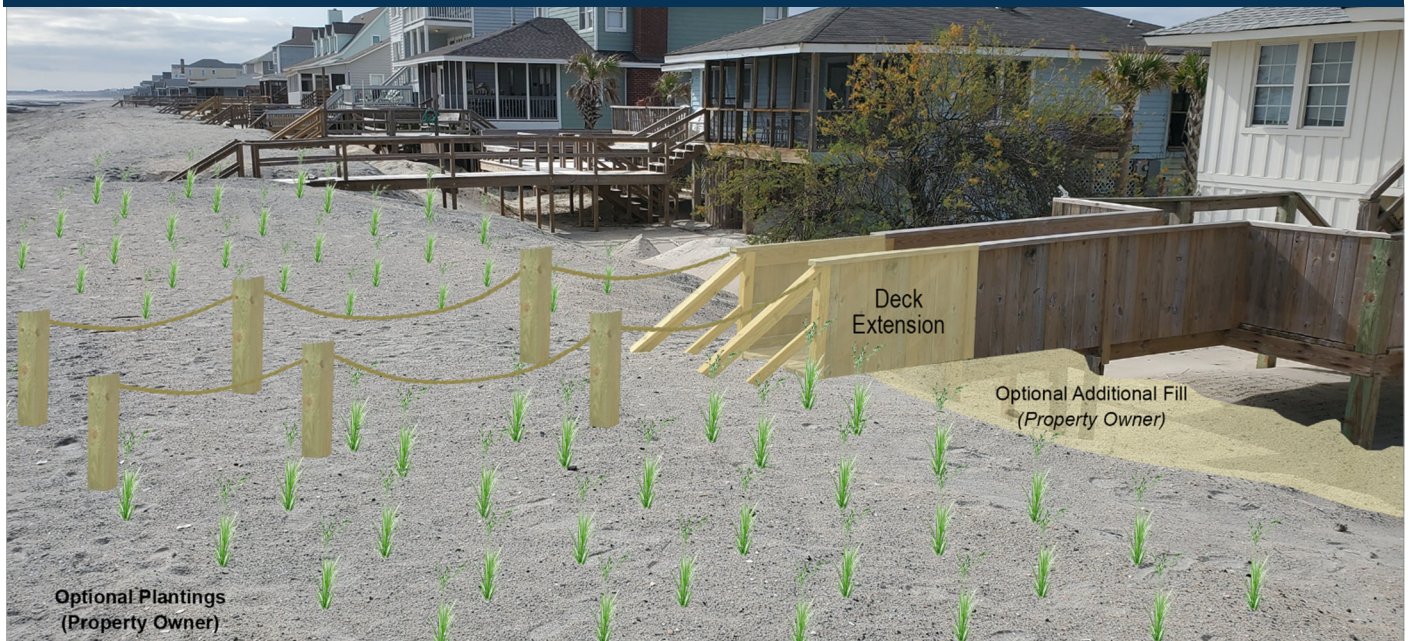
Town of
Pawleys Island
SOUTH CAROLINA

Dune Walkovers and Vegetation

The Town is working with CSE and the US Army Corps of Engineers (USACE) to develop a dune vegetation and sand fencing plan. CSE will coordinate plantings of native dune vegetation types along the project template north of the dune feature (from Groin No. 13 to just north of Pawleys Pier). The vegetation will consist of sea oats, bitter panicum, and a collection of native dune flowers, and will be planted as the project is completed over the next several weeks.

The Town is also working with the USACE to develop a sand fencing and vegetation planting plan along the dune feature from the South End to Groin No. 13. This portion of the project will likely feature sand fencing as well as vegetation. The anticipated installation date for this portion of the project is unknown at present.

Property owners with walkovers that do not extend to the crest of the new berm are advised to construct extensions to their existing walkovers. These walkovers should not span the entire dune. Building recommendations are illustrated below.



CSE recommends that property owners along the new dune feature stay off of the dune. This is especially important once vegetation has been planted. Human trampling of native grasses, shrubs, and flowers is one of the leading causes of vegetation loss in coastal dunes along developed shorelines and can lead to erosion of the dune and loss of beach volume. To protect the dune, property owners are advised to use fence posts and rope guides to help pedestrians travel between the beach and dune walkovers as directly as possible (see above).

Once native vegetation has been established, it is imperative that residents and visitors remain off the dune. Vegetated dunes are a protected habitat in South Carolina and represent an important element in any successful beach restoration project.



Town of
Pawleys Island
SOUTH CAROLINA

Over the next several weeks, CSE will coordinate plantings of native dune vegetation along the project area from Groin No. 13 to just north of Pawleys Pier. The Town is working with the USACE to develop a sand fencing and vegetation planting plan from the South End to Groin No. 13. The installation date for this portion of the project is unknown at present.



Photo taken from a recent dune planting at Isle of Palms, SC.

Please note that property owners are not allowed to harvest sand from the post-project beach for filling under houses. Any material used for restoring landscaping or filling under houses should be beach compatible material acquired from an inland source. This is to guarantee that the design-specified project volumes are maintained along the entire project area. These design volumes are determined using up-to-date survey information, as well as estimates for future erosion patterns following project completion. Manipulation of the newly-established sand may disrupt the intended performance of the beach in the months and years following project completion.

Job Site Safety

For everyone's safety, it is crucial that beachgoers stay away from the active construction zone. Marinex has pushed sand ramps over the pipeline on the beach along the completed sections of the renourishment project to enable the public to safely access the ocean. Beachgoers are reminded to stay away from the active construction zone and not to pass safety fencing, tape, or signs.



Town of
Pawleys Island
SOUTH CAROLINA

Sand ramps enable beachgoers to safely walk over the pipeline to access the ocean.



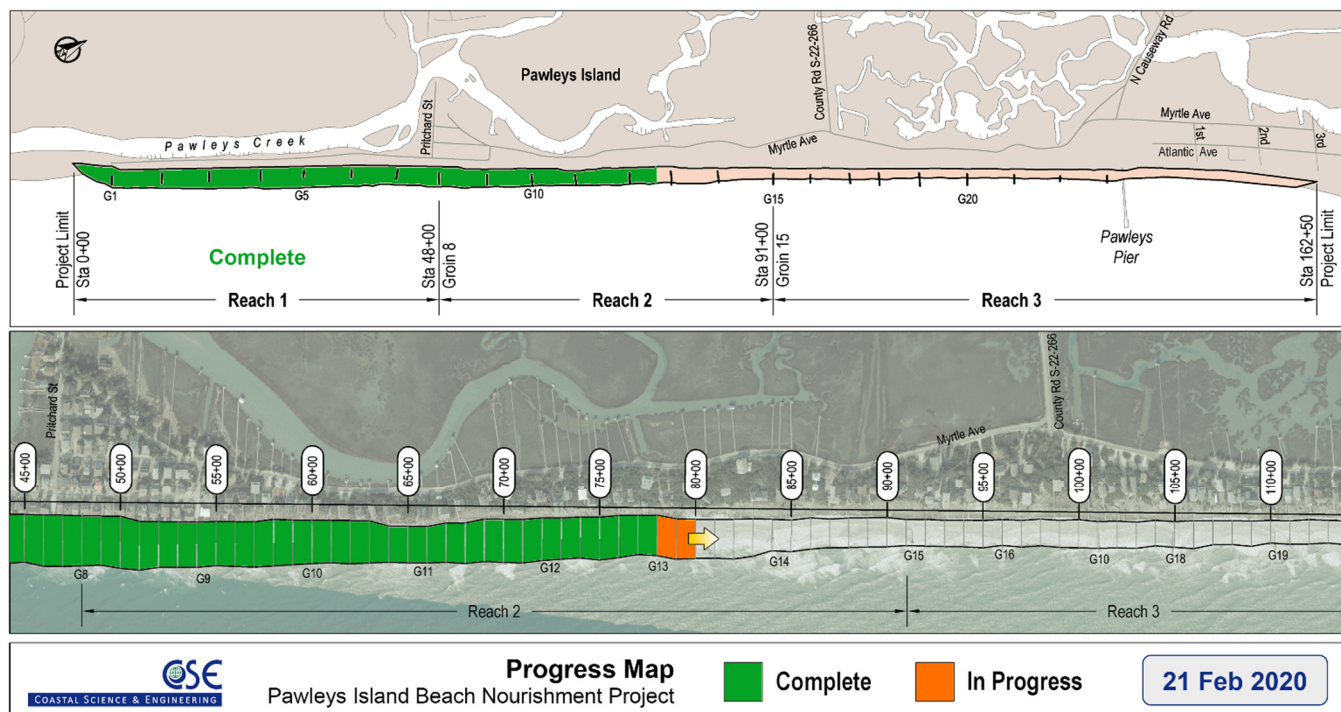
The public is reminded to not pass safety fencing, tape, or signs in the construction zone.



Progress Map

If weather permits, pumping will be conducted 24/7. Work began on the south end of the island and is proceeding north. On average, 100 to 300 feet of progress is expected to be completed each day.

The project is anticipated to be completed in March 2020.



For regular project updates visit
www.townofpawleysisland.com/beach-renourishment.



Town of
Pawleys Island
SOUTH CAROLINA

323 Myrtle Avenue • Pawleys Island, SC 29585 • (843) 237-1698

www.townofpawleysisland.com



This newsletter is published in partnership with Coastal Science & Engineering, Inc.
PO Box 8056, Columbia SC 29209 • 803.799.8949 • www.coastalscience.com